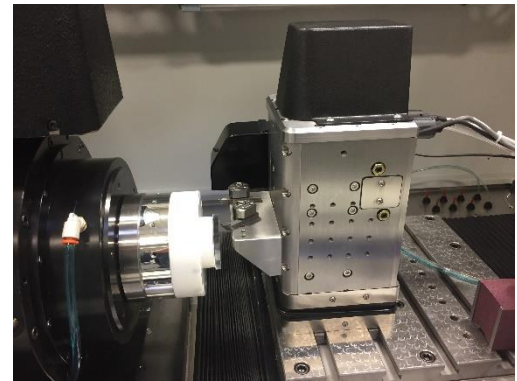


CNC Multi-Tool Holder

Programmable Height Adjustment for up to 3 Tools

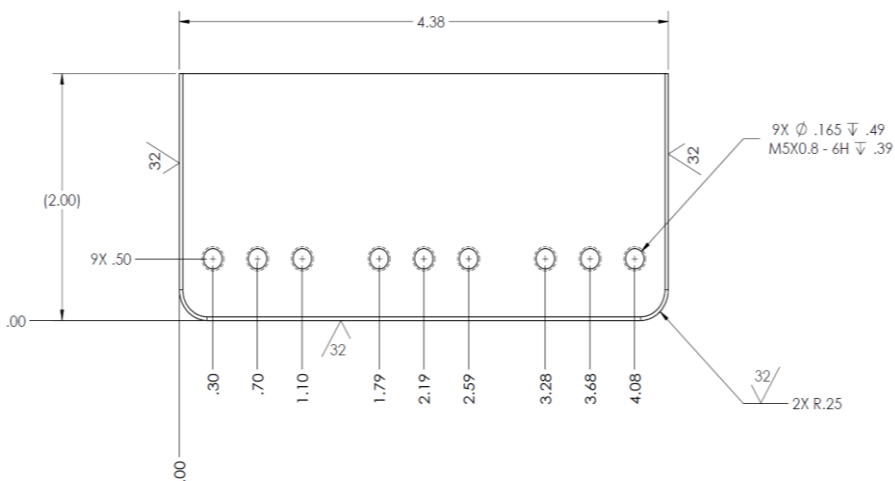
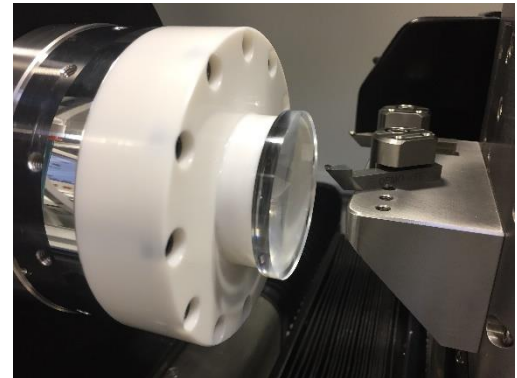
Design Specifications

- ◆ Vertical Travel: 25 mm
- ◆ Total System Weight: 45 lbs
- ◆ Maximum Work Load: 10 lbs
- ◆ Maximum Speed: 120 mm/min
- ◆ Bi-Directional Repeatability: 0.1 μ m
- ◆ Linear Resolution: 1.2 nm (interpolated)



Engineered Features

- ◆ Capable of holding up to 3 diamond tools
- ◆ Center mounted linear scale maximizes stability
- ◆ Optional side mounting of WECS & Touch Probe
- ◆ DC-Micromotor with 69:1 planetary gear head



Tooling Shelf Mounting Hole Pattern

