

Optical Observation Camera System

Safely Observe, Record Video, Capture Still Photos

Camera Specifications

- ◆ Resolution: 1.3 Mega Pixels
- ◆ Frame Rate: 30 Frames per second
- ◆ Lens Control: Manual, Zoom & Focus (Digital Image Zoom/Pan in HMI)
- ◆ Pixel Size: 5.3µm x 5.3µm
- ◆ Max image circle: 1/1.8"
- ◆ Communication Type: GigE (Gigabit Ethernet)
- ◆ Connector: RJ-45 Ethernet Connector (data and power)
- ◆ Power Supply: Power Over Ethernet (power is fed through the GigE connection)
- ◆ Camera Software: Basler Pylon API's for communicating & controlling camera settings through NanoSmart V2 HMI

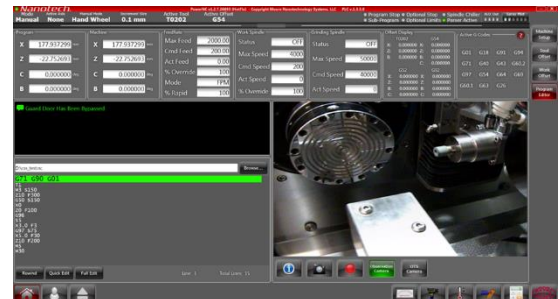


Lens Specifications

- ◆ Focus: Manual
- ◆ Zoom: Manual
- ◆ Lens Focal Length: 13mm to 130mm
- ◆ Working Distance: 100mm to 500mm

Software Specifications

- ◆ Software for NanoSmart v2 machines integrated into HMI
- ◆ Control of Digital Zoom & Pan
- ◆ Ability to save videos & still photos



Requires NanoSMART 1.2.601.0 or newer
See 31-02419 electrical schematic